

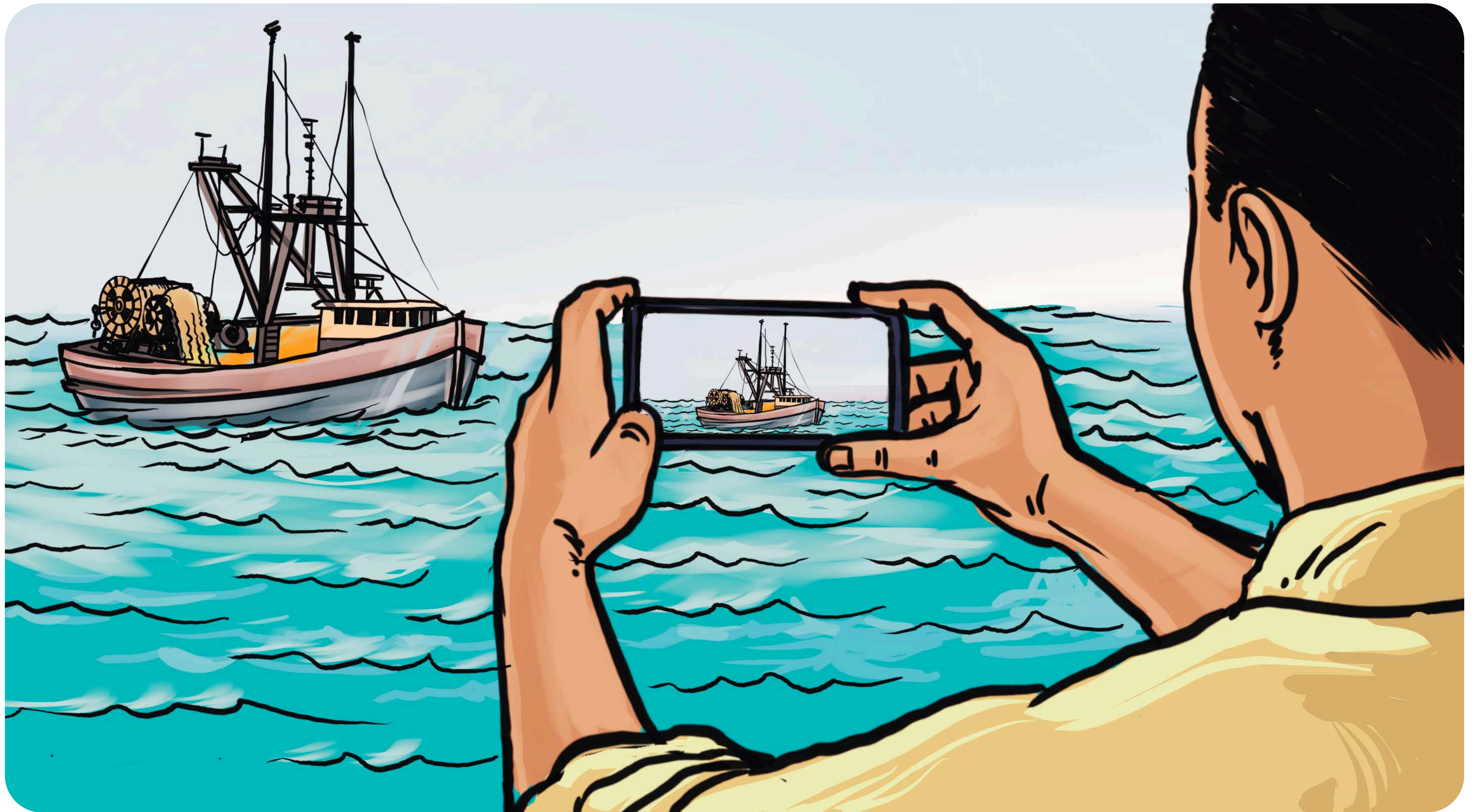
DOS & DON'TS

CAPTURING HIGH-QUALITY
EVIDENCE OF ILLEGAL OR
DESTRUCTIVE FISHING
BEHAVIOUR AT SEA USING
EJF'S 'DASE APP'



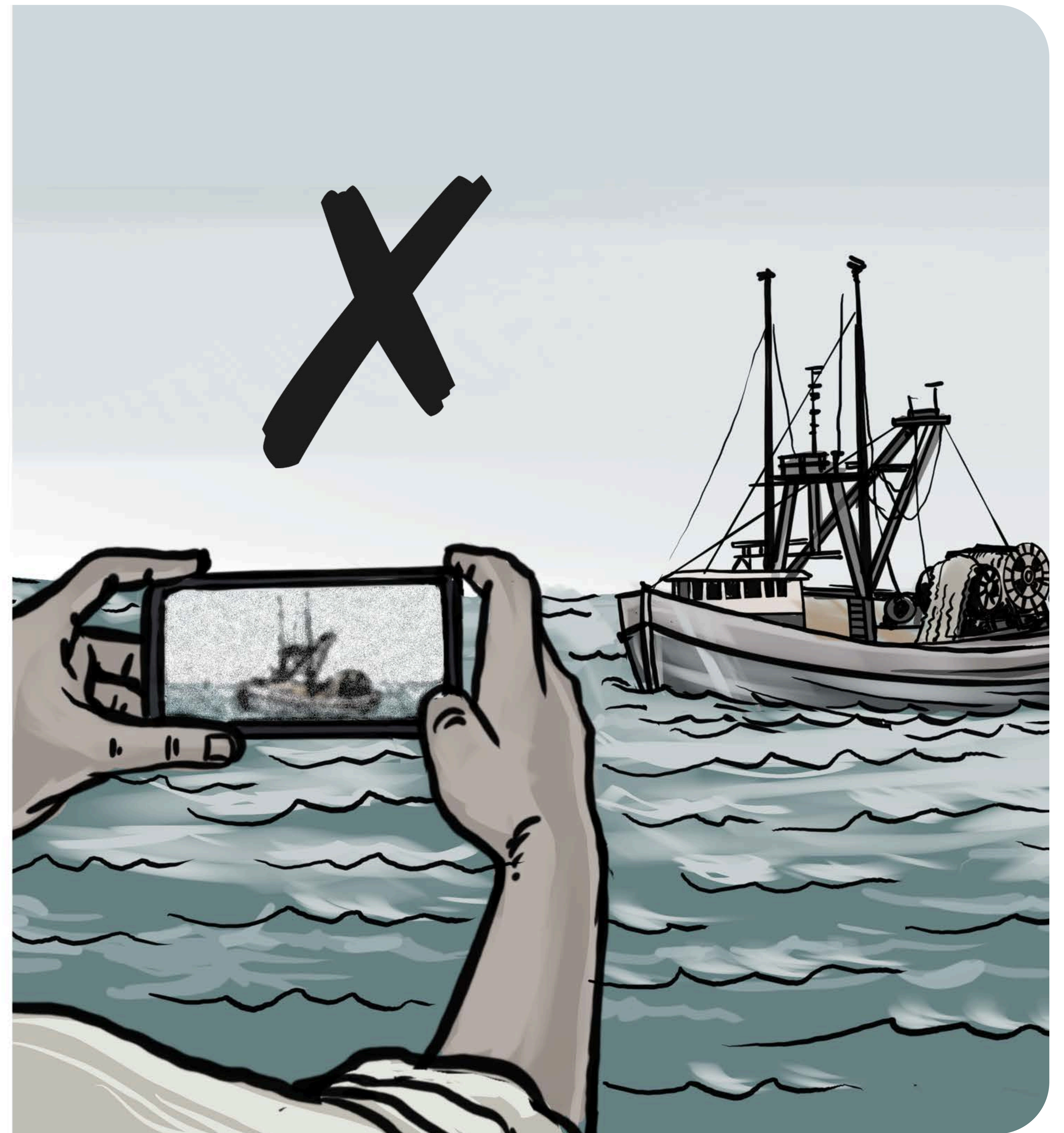
DOS

The image features a dark blue background with a large, light blue semi-circle on the right side. A horizontal white bar runs across the middle. On the right side of this bar, there is a dark blue circle and a smaller orange circle. The text 'DOS' is written in white, bold, sans-serif font on the left side of the white bar.



DO

Take pictures and videos using the ‘**DASE**’ mobile app as much as possible



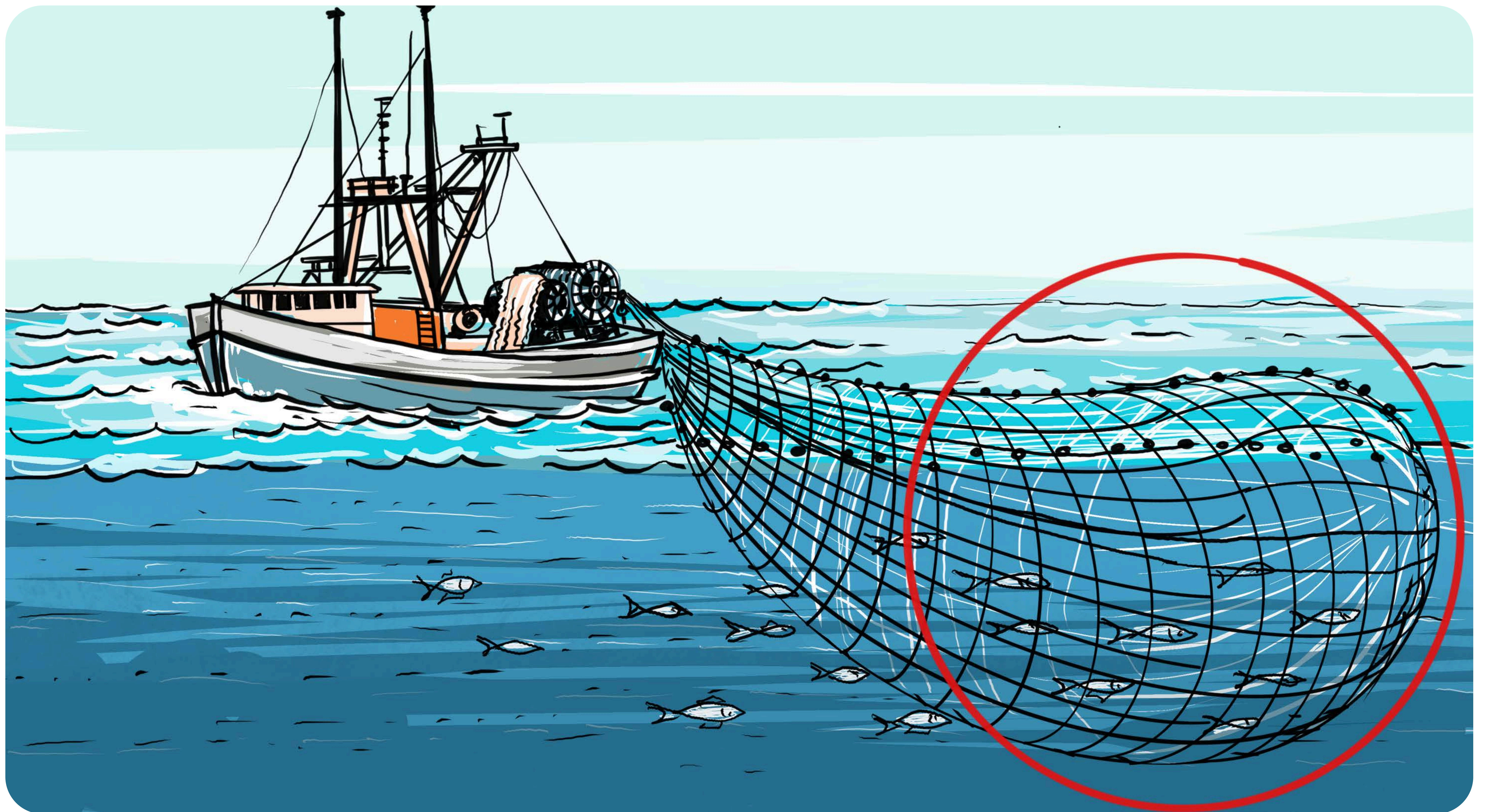
DO

Ensure pictures and videos are as clear as possible



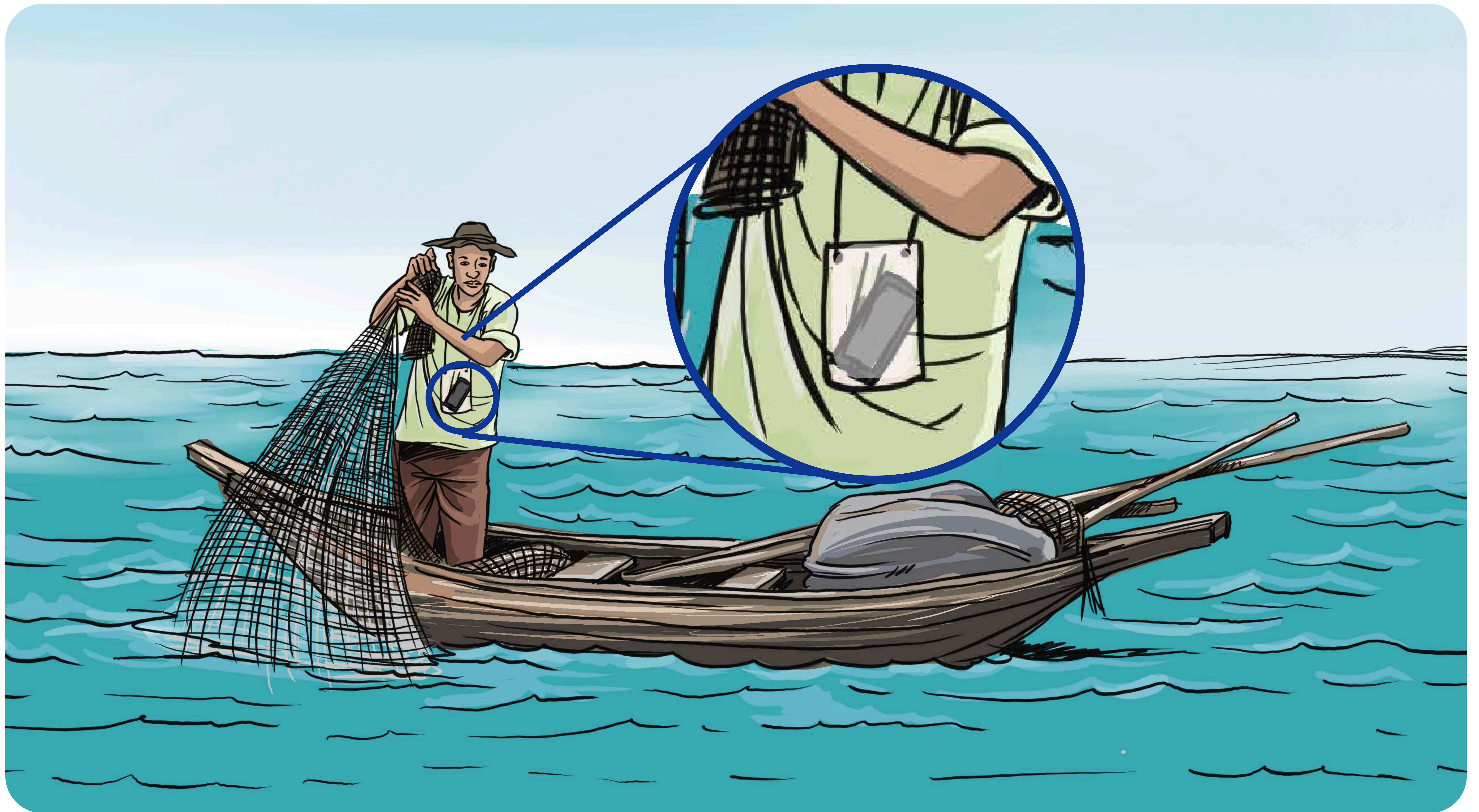
DO

Ensure pictures capture vessel numbers and names



DO

Submit evidence that shows the vessel is actively fishing - i.e. its nets are in the water



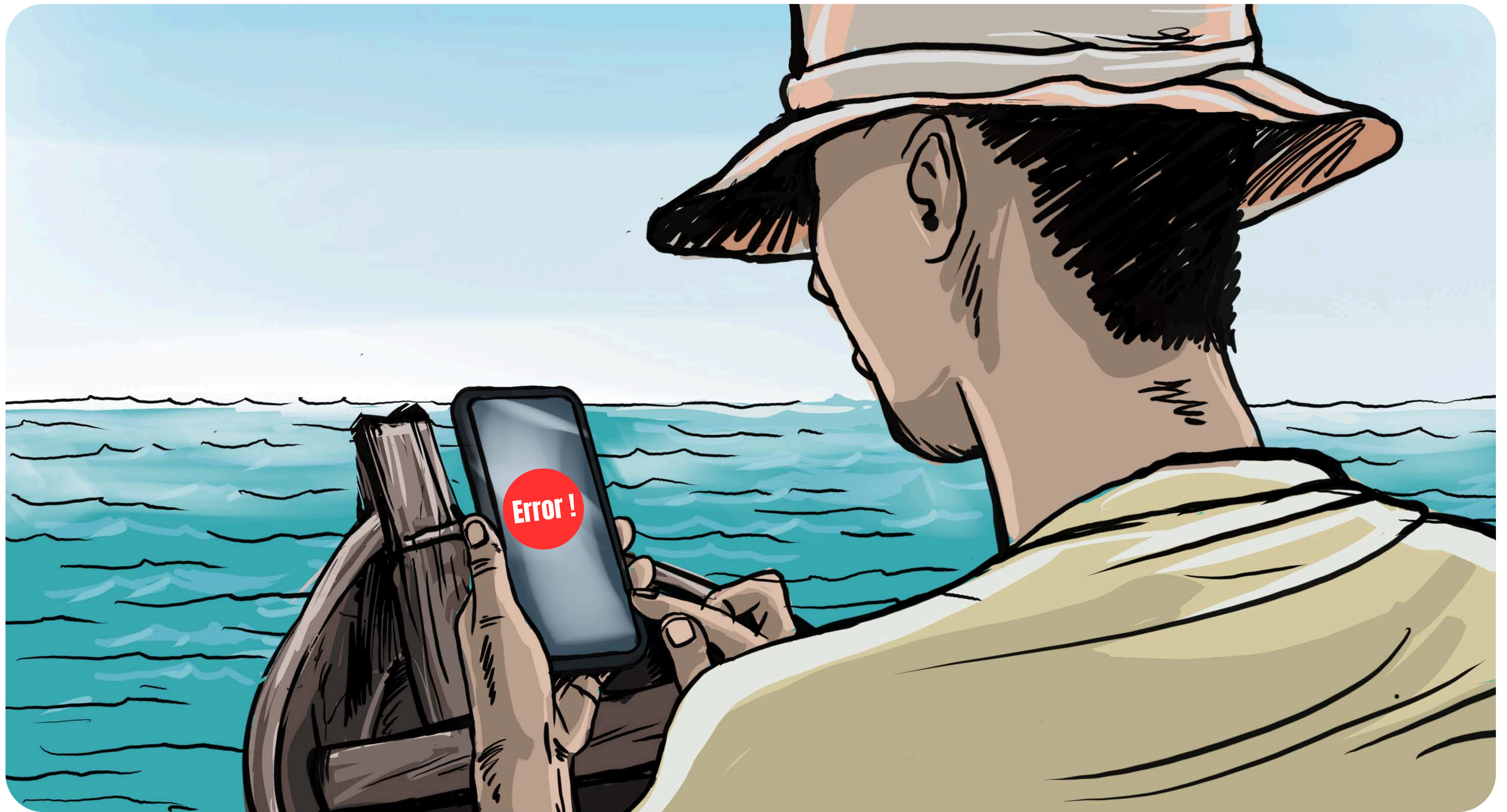
DO

Protect your phone with a plastic wallet to stop it from being damaged or destroyed



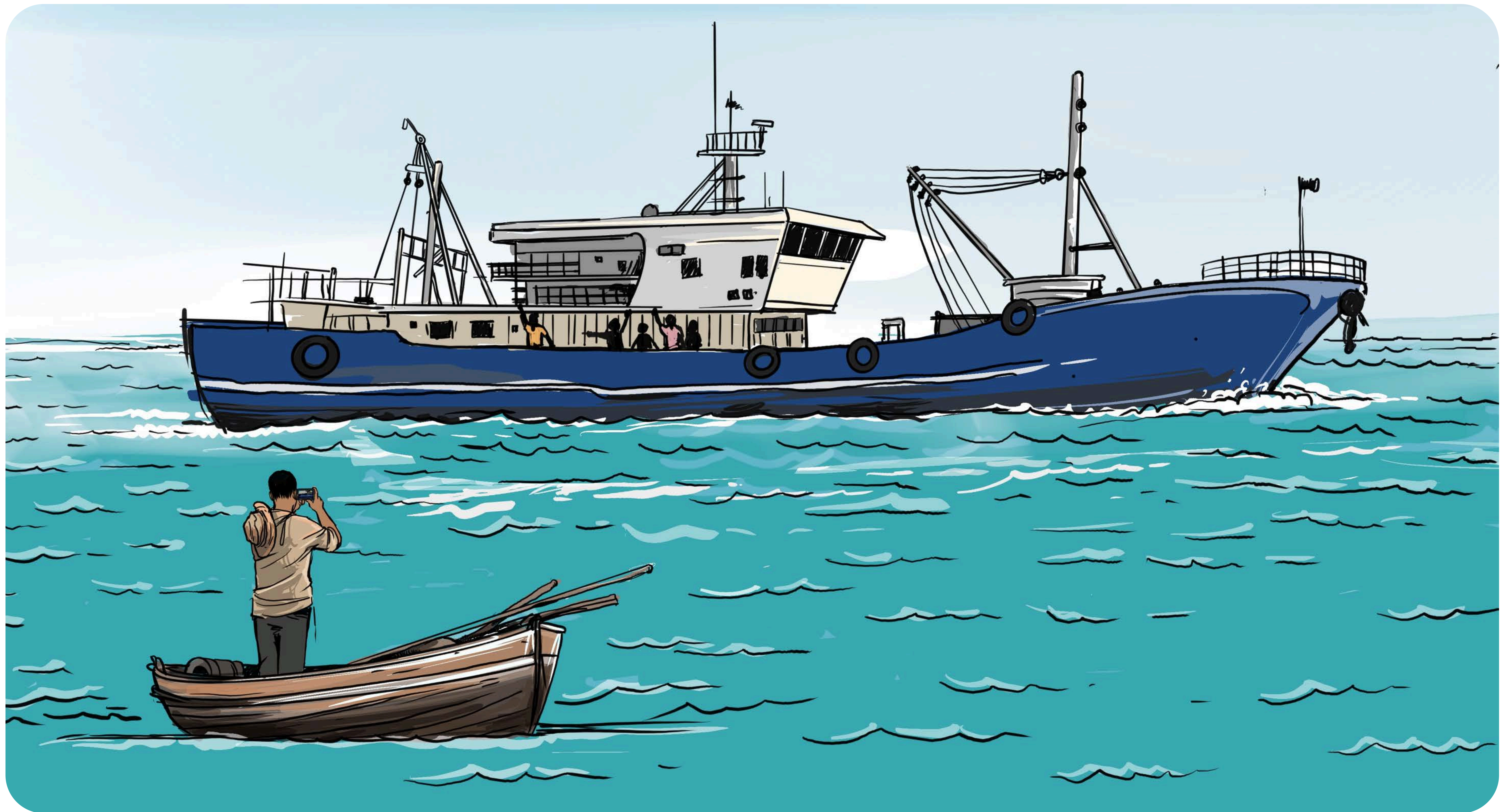
DO

Allow time for your location to become more accurate when capturing your GPS.



DO

Report any technical issues to EJF as soon as possible.



DO

Move away from an industrial vessel immediately if it is showing signs of aggression towards you

DON'TS

The image features a dark blue background with a large, light blue semi-circle on the right side. A white horizontal bar runs across the middle of the image. On the right side of this bar, there is a large dark blue circle and a smaller orange circle positioned just to its right. The word "DON'TS" is written in large, bold, white capital letters across the white bar.



DON'T

Get too close to the industrial vessel when capturing photos - maintain a safe distance



DON'T

Try to apprehend or arrest those suspected of illegal fishing



DON'T

Lend EJF equipment to family or friends



DON'T

Use EJF equipment for personal business.